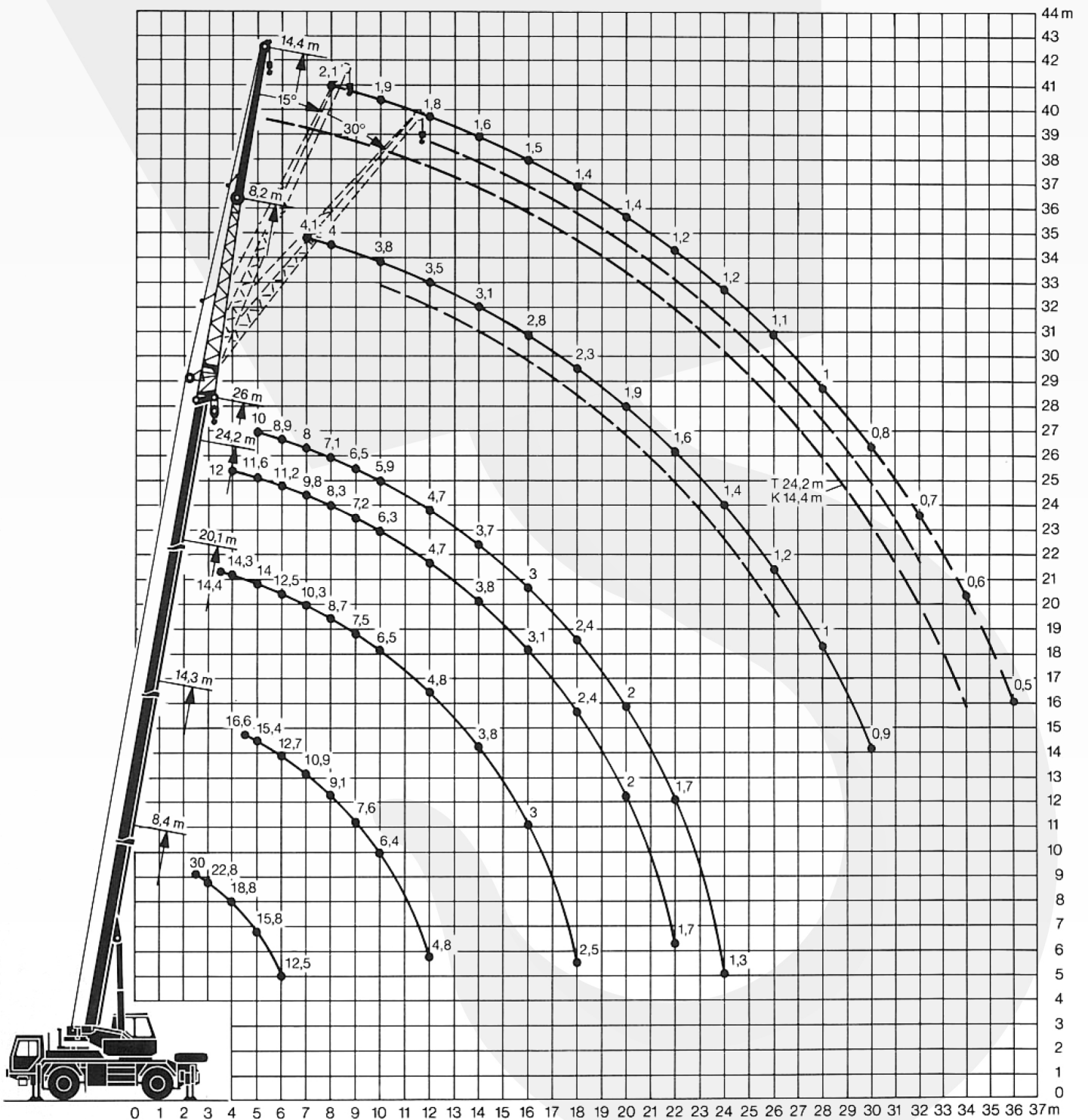





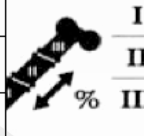
¹⁾ Allradlenkung
All-wheel steering
Direction toutes roues



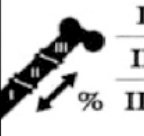
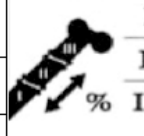
	Maße / Dimensions / Encombrement mm											
	A	A*	B	C	E**	F	G	α	α_1	β	β_1	
14.00 R 25	3585	3485	2500	2114	2950	380	440	23°	15°	23°	15°	
17.5 R 25	3570	3470	2600	2154	2935	380	440	23°	15°	23°	15°	

* 100 mm abgesenkt
100 mm lowered
abaissé 100 mm

** abgesenkt und ohne Kabinenoberteil
lowered and without upper part of cab
abaissé et sans partie supérieure de cabine



	Boom Length [m]						
	8.4m	14.3m	20.1m	24.2m	26m		
2.5	30.0					2.5	
3	22.8					3	
3.5	20.7		14.4			3.5	
4.0	18.8		14.3	12.0		4.0	
4.5	17.2	16.6	14.1	11.8		4.5	
5.0	15.8	15.4	14.0	11.6	10.0	5.0	
6.0	12.5	12.7	12.5	11.2	8.9	6.0	
7.0		10.9	10.3	9.8	8.0	7.0	
8.0		9.1	8.7	8.3	7.1	8.0	
9.0		7.6	7.5	7.2	6.5	9.0	
10.0		6.4	6.5	6.3	5.9	10.0	
12.0		4.8	4.8	4.7	4.7	12.0	
14.0			3.8	3.8	3.7	14.0	
16.0			3.0	3.1	3.0	16.0	
18.0			2.5	2.4	2.4	18.0	
20.0				2.0	2.0	20.0	
22.0				1.7	1.7	22.0	
24.0					1.3	24.0	
	I	0	33	66	92	100	
	II	0	33	66	92	100	
	III	0	33	66	92	100	

	Boom Length [m] / Jib Length / Jib Angle												
	24.2m						26.0m						
	8.2m			14.4m			8.2m			14.4m			
	0°	15°	30°	0°	15°	30°	0°	15°	30°	0°	15°	30°	
7.0	4.1						3.6						7.0
8.0	4.0			2.1			3.4			2.1			8.0
9.0	3.9	3.0		2.0			3.2	2.5		2.0			9.0
10.0	3.8	2.8	2.3	2.0			3.2	2.4	1.9	1.9			10.0
12.0	3.5	2.6	2.2	1.9	1.4		2.9	2.2	1.9	1.8	1.4		12.0
14.0	3.1	2.5	2.1	1.7	1.4	1.2	2.7	2.1	1.8	1.6	1.3	1.1	14.0
16.0	2.8	2.3	2.0	1.5	1.3	1.2	2.5	2.0	1.7	1.5	1.3	1.1	16.0
18.0	2.3	2.2	2.0	1.4	1.3	1.1	2.2	1.9	1.7	1.4	1.2	1.0	18.0
20.0	1.9	2.0	1.9	1.4	1.2	1.1	1.9	1.8	1.6	1.4	1.2	1.0	20.0
22.0	1.6	1.7	1.7	1.3	1.2	1.0	1.6	1.6	1.5	1.2	1.1	0.9	22.0
24.0	1.4	1.4	1.5	1.1	1.1	1.0	1.3	1.4	1.4	1.2	1.0	0.9	24.0
26.0	1.2	1.2	1.2	1.0	1.1	1.0	1.1	1.2	1.2	1.1	1.0	0.9	26.0
28.0	1.0	1.0		1.0	1.0	0.9	0.9	1.0	1.0	1.0	0.9	0.9	28.0
30.0	0.9			0.9	0.9	0.9	0.8	0.8		0.8	0.8	0.8	30.0
32.0				0.7	0.8	0.8				0.7	0.8	0.8	32.0
34.0				0.6	0.7					0.6	0.6	0.7	34.0
36.0										0.5	0.5	0.7	36.0
38.0													38.0
	I	92						100					
	II	92						100					
	III	92						100					